

TRUSSKITS COLORS AND FINISHES



STANDARD COLORS



POWDERCOATED

TRUSSKITS.COM POWDER

The Color Wheel above and the Color charts below features a wide selection of Powder Coating Colors intended for industrial applications. They includes a wide selection of Black and White colors. Colors not displayed in these color charts might appear in another color chart or can be made up for you to order. All colors exhibited in this Color Chart are suitable for Exterior and Interior applications, with the exception of **Black Flat Matte, 69/80331** and **Midnight Black Epoxy Wrinkle, 69/80143**; these two colors are intended for interior applications only.

5@-B: CFA 5H-CB.



Non metallic stock and custom-colors in **Series 39**, **Series 49** and **Series 59**; are made in the USA and Canada, are periodically re-certified and carry the (Underwriter Laboratories) Recognized Component Mark (Spec DTOV2, MH16276 and Spec DTOV2.MH27573). This UL Mark is for all equipment and products intended for the American and Canadian markets.

ASA colors: Polyester-based ASA colors; also referred to as ANSI colors, are available in various shades of industrial Grey in **Series 39** and **Series 49** for industrial machinery applications

High Gloss Levels Colors: Polyester-based **Series 49** color selection exhibits exceptional flow properties and is available in high gloss levels.

Anti-Graffiti properties: Polyurethane-based **Anti-Graffiti White, 44/10008**, and **Anti-Graffiti Clear Glossy, 44/00018** provide excellent chemical resistance and surface hardness properties. **Anti-Graffiti Clear Glossy, 44/00018** can be applied as top coat over any **of are** powder coating to obtain a tough, easy to clean surface.

Anti-Skid properties: Polyester-based **Anti Skid Black, 49/80521**, is an ideal finish for metal stair cases and decking, safety gratings, floor plates and grids, maintenance cat walks, elevator floors, conveyors and additional industrial applications that require an anti-slip coating for safety purposes. It is recommended to apply a primer or a semi-gloss base coat.

High reflectivity properties: Polyester-based **High-Reflective White, 49/10410** strikes a perfect balance between smoothness and hiding power. Formulated for lighting applications, it offers a reflectivity value of 92+ with a gloss level of over 90 units.

Out-Gassing Forgiving (OGF) properties: OGF powder coatings are developed for castings, hot galvanized and forged steel, aluminum flame sprayed and other porous and out-gassing prone substrates such as fired clay and ceramics. They are available in a variety of colors including **White, 49/10870**, and **Chrome, 49/91312**. OGF additives can be added to any powder coating. However, for large volumes, it is recommended to produce the powder coating in an OGF formulation on a custom-basis.

Antique/vein metallic finishes: Polyester-based antique/vein metallic finishes in **Series 59** are formulated with mica pigments and do not require a clear top coat for either exterior or interior applications. Fine and rough textured Fine, smooth and rough textured colors with gloss levels ranging from matte to high gloss are ideal for automobile under-body and marine environments where high chip resistance and wet-paint looks may be required. To ensure adequate corrosion protection in the valleys of the textures, it is essential to observe the minimum film thickness recommendations (see applicable Product Data Sheets).

Wrinkle finishes: Wrinkle finishes provide an attractive solution for electronic cabinets, metal cabinets, lighting fixtures, automotive accessories and other applications where the concealment of metal imperfections is required. Midnight Black Epoxy Wrinkle, 69/80143 is suitable only for interior applications. Industrial warehouse racking systems A number of colors are formulated in polyester-based Series 49 as an economical solution to match typical industry colors for industrial warehouse racking systems. Steel Rack Yellow, 49/20047, Steel Rack Orange, T49/25001 and Steel Rack Red, 49/30052, exhibit limited UV stability.

Seal-Cor: Polyester-based Grey, 39/71103 is a weather resistant powder coating, compliant with AAMA 2603 specifications. It is recommended as an alternative to epoxy-based zinc-rich and zinc-free primers or as a one-coat solution to conventional two-coat systems (primer + top coat). Black, 223/80001 is formulated exclusively for automotive applications. Seal-Cor can be formulated, to order in any custom color.

Polyester Urethanes: Polyurethane-based Series 44 is available in a variety of colors, gloss levels and finishes such as matte, semi-gloss glossy, textured and metallics. Colors not available in stock can be made to order.

Clear Coats Polyester: Polyester super durable, polyurethane and acrylic-based clear finishes are available in a variety of gloss levels from matte to high gloss.

Color Swatches: featured in this color chart have been matched to color standards at a 60-degree visual angle under a D65 Daylight primary source. Gloss level on metallic, fine and rough textured swatches cannot be accurately measured. The swatches are to be considered as an indication only. In practice, discrepancy between the color swatch and the actual powder coating may arise. This is due to paper and ink limitations, the influence of light and heat during the color chart production, as well as gloss level, substrate, surface variations, binder systems and pigments, coating thickness and cure oven conditions used during application. For an accurate color and finish assessment, it is recommended to obtain a powder coated sample panel by calling:

TRUSSKITS.COM at: 1-800-522-2326



Glossy | 39/30070
Purple | gloss level 90±5



Glossy | 39/40010
Royal Blue | gloss level 85±5



Glossy | 59 /40653
Mercury Blue | gloss level 80±5



Glossy | 49 /44444
Post Office Blue | gloss level 95±5



Glossy | 39/50060
U.S. Green | gloss level 90±5



Glossy | 59/50412
Fence Green | gloss level 85±5



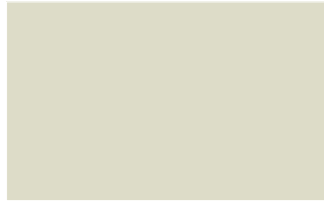
Glossy | 68/51548
Deer Green | gloss level 85±5



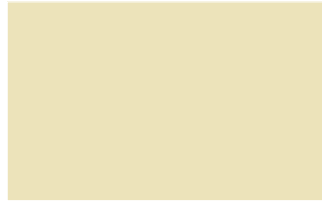
Glossy | 49/55555\
Forest Green | gloss level 95±5



Glossy | 49/10316
White | gloss level 90±5



Glossy | 39/15020
Almond | gloss level 90±5



Glossy | 39/15010
Beige | gloss level 90±5



Glossy | 49/11111
Appliance White | gloss level 95±5



Glossy | 49/20047 ▲
South Beach Yellow | gloss level 90±5



Glossy | 68/20057
Deer Yellow | gloss level 85±5



Glossy | 39/20130
Ferrari Yellow | gloss level 85±5



Glossy | 49/10388
Cream | gloss level 95±5



Glossy | 49/25001 ▲
Home Depot 1 Orange | gloss level 90±5



Glossy | 59/20360
New Cat Yellow | gloss level 80±5



Glossy | 39/20020
Safety Yellow | gloss level 90±5



Glossy | 49/66666
Yellow | gloss level 95±5



Glossy | 49/30052 ▲
Ferrari Red | gloss level 90±5



Glossy | 39/32920
Pumpkin Orange | gloss level 90±5



Glossy | 39/20010
Safety Orange | gloss level 90±5



Glossy | 49/22222
Home Depot 2 Orange | gloss level 95±5



Glossy | 68/30019
Harvest Red | gloss level 85±5



Glossy | 39/30010
Ruby Red | gloss level 90±5



Glossy | 39/30100
Fire Engine Red | gloss level 85±5



Glossy | 49/33333
Red | gloss level 90±5



Matte interior | 69/80331
Black Flat Matte | gloss level 4±2



Matte | 44/80066
Black Magic Flat Matte | gloss level 6±3



Fine texture | 39/80200
Black Fine Texture



Matte | 39/60060
Roman Bronze Matte | gloss level 20±5



Matte | 44/90053
Millennium Black Flat Matte | gloss level 8±5



Matte | 44/80060
Solar Black Flat Matte | gloss level 6±3



Fine Texture | 49/80830
Black Matte Fine Texture



Metallic | 39/60020
Bronze Matte



Matte | 39/80020
Black Matte | gloss level 20±5



Matte | 49/80350
Black Matte RAL 9005 | gloss level 20±7



Fine Texture | 49/81241
Black Extra Fine Texture



Semigloss | 49/62070
Rail Bronze | gloss level 60±5



Matte | 44/90052
Millennium Black Matte | gloss level 35±7



Matte | 49/81430
Black Semi Matte | gloss level 40±5



Smooth Texture Interior | 69/80143
Midnight Black Epoxy Wrinkle



Glossy | 39/60010
Chocolate Brown | gloss level 80±5



Semigloss | 44/90051
Millennium Black Semi | gloss level 60±5



Semigloss | 49/80033
PacCar Black Semi | gloss level 55±5



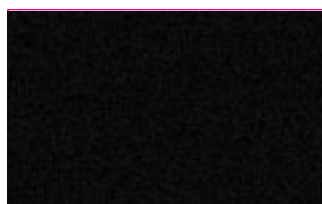
Fine Texture | 39/80170
Black Wrinkle



Fine texture | 49/62721
Brown Fine Texture



Semigloss | 39/80040
Black Semigloss | gloss level 60±5



Glossy | 39/80010
Gloss Black | gloss level 85±5



Fine Texture | 49/80521
Anti Skid Black



Semigloss | 223/80001
Seal Kor Black | gloss level 60±5

NEW



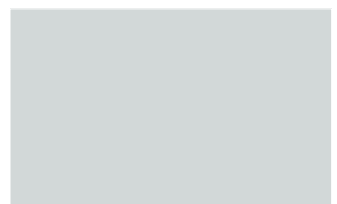
Glossy | 49/80070
Truck Black | gloss level 95±5



Glossy | 49/80036
Wet Black | gloss level 95±5



Rough Texture | 49/80990
RAL 9011

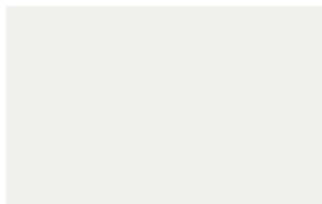


Semigloss | 39/71103
SealKor Grey | gloss level 40±5

NEW



Glossy | 49/88888
Gloss Black | gloss level 95±5



Glossy | 49/10410
High-Reflective White | gloss level 90+



Matte | 49/10103
White Matte RAL 9010 | gloss level 20±5



Matte | 49/11350
White Matte | gloss level 20±5



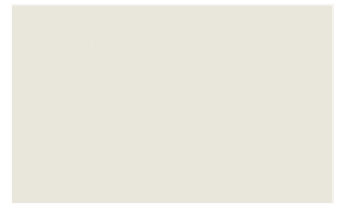
Glossy | 49/70158
Dark Grey | gloss level 95±5



Metallic | 39/90000
Silver



Matte | 39/10040
White Semi Matte | gloss level 40±5



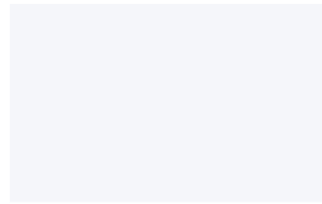
Semi-gloss | 49/13370 Off
White | gloss level 60±5



Glossy | 49/77777
Light Grey | gloss level 95±5



Glossy | 49/19365
Tan | gloss level 85±5



Glossy | 49/11421
WWW White | gloss level 85±5



Glossy anti-graffiti | 44/10008 Anti-
Graffiti White | gloss level 90±5



Glossy | 49/99999 007 ***
007 Silver



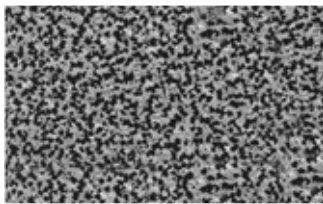
ASA | 39/70010 ASA-70
Silver | gloss level 85±5



Glossy | 39/10210
Apollo White | gloss level 90±5



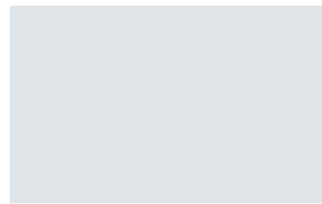
Glossy | 49/13721
El Blanco | gloss level 90±5



Vein Metallic | 59/90820
Silver Metallic



ASA | 39/70020
ASA-61 | gloss level 80±5



Glossy | 39/10200
Appliance White | gloss level 90±5



Glossy | 39/10160
Horizon White | gloss level 90±5



Vein Metallic | 59/90050
Bronze Metallic



ASA | 49/70082
ASA-81 Semigloss | gloss level 60±5



Glossy | 39/10150
Western White | gloss level 90±5



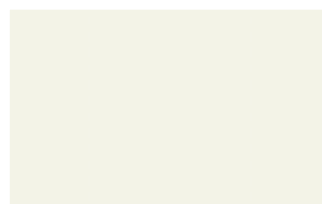
Glossy | 39/10010
Sky White | gloss level 90±5



Vein Metallic | 59/90821
Copper Metallic



ASA | 39/70200
ASA-49 | gloss level 80±5



Fine Texture | 49/13150
White Fine Texture



Rough Texture | 49/11570 RTG
Nature White